

SAM4s SPT-4806

15" Fanless LED Touch Screen

Projective Capacitive Multi-Touch System

The SPT-4806 touch screen terminal with a dual-core CPU is designed to reliably & efficiently power demanding applications in Hospitality & Retail markets.



HOSPITALITY



RETAIL



HEALTHCARE &
PHARMACY



POST &
PARCEL



WAREHOUSE &
STORAGE

SAM4s SPT-4806

15" Fanless LED Touch Screen

Projective Capacitive Multi-Touch System

SAM4s SPT-4806 SPECIFICATION

SYSTEM	CPU	Intel Atom D2550 1.86Ghz + Nm10.
	MEMORY	DDRIII 2 Slots (upto 4GB).
	HDD	SATA-II 2.5" 1 Slot.
	LAN	1 x 10/100/1,000Mbps.
DISPLAY	LCD	PCT Projected Capacitive Touch Technology - Supports Multi-Touch.
	TOUCH	True Flat 15 Inch Touch.
INTERFACE	SERIAL	RS-232C x 4 Ports (3 x 9P DSUB, 1 x RJ45). (5V/12V Bios Selectable).
	PARALLEL	1 Port.
	USB	6 Ports.
	VGA	1 Port.
	DRAWER	1 Port (12V/24V Selectable).
	AUDIO	3 Ports (Line In/Line Out/Mic In) + Internal Speaker (2.0W + 2.0W).
POWER	ADAPTER	60W Internal Adaptor.
	INPUT/OUTPUT	Input AC 100~240V/50~60Hz, Output DC 12V/5.0A.
OS		Windows XP, 7, 8, 10, POSReady 9, WEPOS & Linux.



Optional Dallas Key/MSR Sign On.



Clean, Quiet Fan Free Design.



Optional Rear Customer Display.

- Industrial Quality LED 15" Display
- True Waterproof Flat Front Panel.
- 15" TFT LED, LVDS 1024 x 768 (XGA LCD)
- PCT Projected Capacitive Touch.
- Technology Supports Multi Touch.
- Intel Atom D2550 1.86Ghz Fanless Processor.
- DDRIII 2 Slots 2Gb Memory (up to 16Gb).
- SATA-II 2.5" 320Gb HDD.
- 1 x 10/100/1000 Mbps LAN.
- Available in Glossy Black or White.
- External Power Supply.

- Small Foot Print.
- VESA Wall or Pole Mountable.
- Windows POSReady 7.

Options

- Sam4s 2-Line VFD Customer Display.
- Sam4s 7" LCD Rear Display.
- Magnetic Dallas Reader.
- MCR Reader.
- External RFID Reader.
- Windows XP, 7, 8, 10, POSReady 9, WEPOS & Linux.

YOUR AUTHORISED SAM4S DEALER IS:-



Whilst every effort has been made to provide current photographs, descriptions and specifications the manufacturers reserve the right to change specifications, illustrations, model numbers and appearance of any item without prior notification and therefore will not be held responsible for any variations.

SAM4s



HIGH GLOSS
IN BLACK OR
WHITE FINISH
SAM4s



Specification can change without notification. Features may not be available in certain countries.

SAM4s SPT-4806

15" Fanless LED Touch Screen
Projective Capacitive Multi-Touch System



Optional Dallas Key/MSR Sign On.



Clean, Quiet Fan Free Design.



Optional Rear Customer Display.



VESA Wall & Pole Mount Option.

FEATURES



HIGH GLOSS
IN BLACK OR
WHITE FINISH
SAM4s



PROJECTIVE CAPACITIVE
PCT
MULTI-TOUCH SYSTEM

The Sam4s SPT-4806 has a range of optional customer displays from the 2 line LED or 7" for those wishing to use the customer display for advertising or promotions purposes.

A reliable and accessible system the Sam4s SPT-4806 PC POS terminal has many added benefits making it excellent value for money and a great investment as your POS equipment.

- Industrial Quality LED 15" Display True Waterproof Flat Front Panel.
- 15" TFT LED, LVDS 1024 x 768 (XGA LCD) PCT Projected Capacitive Touch.
- Technology Supports Multi-Touch.

- Intel Atom D2550 1.86Ghz Fanless Processor.
- DDRIII 2 Slots 2Gb Memory (up to 16Gb).
- SATA-II 2.5" 320Gb HDD.
- 1 x 10/100/1000 Mbps LAN.
- Available in Glossy Black or White.
- External Power Supply.
- Small Foot Print.
- VESA Wall or Pole Mountable.
- Windows POSReady 7.

Options

- Sam4s 2-Line VFD Customer Display.
- Sam4s 7" LCD Rear Display.
- Magnetic Dallas Reader.
- MCR Reader.
- External RFID Reader.
- Windows XP, 7, 8, 10, POSReady 9, WEPOS & Linux.

The Sam4s SPT-4806 vibrant & precise 15" projective capacitive multi-touch display is extremely durable in most environments including withstanding water contact, dust and grease.

The Sam4s Capacitive touch panels will activate with either a bare finger or a capacitive stylus preventing users from using pens, credit cards or sharp objects which potentially would reduce the life expectancy of resistive touch panels.

In addition the screen has a more vivid and crisp colour enhancing the quality of the POS user interface.

Incorporating the latest Intel Atom D2550 1.86Ghz fanless

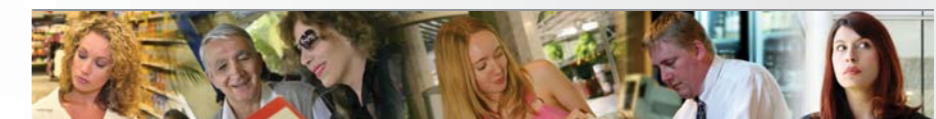
processor, the Sam4s SPT-4806 provides all the power required for the most demanding POS software solutions.

Coupled with its on board SATA 360Gb HDD, ensures that the Sam4s SPT-4806 has the capacity required for all retail and hospitality environments.

With its spill proof multi-touch bezelless display, ergonomic design and available in high gloss black or white, the Sam4s SPT-4806 is one of the most stylish point of sale terminals in its sector.

With either traditional stand or VESA options for wall and pole mount provides greater flexibility of installation.

Sam4s SPT-4806 Comms



1). Cash Drawer Voltage 12/24V (Option).	Switch the Power (12/24V) for Cash Drawer.
2). RJ-11 6-Pin Cash Drawer Port (Option).	Connect a Cash Drawer.
3). D-SUB 25-Pin Printer (Parallel) Port.	Connect Parallel Devices like a Printer.
4). DVR Card Port (Option).	N/A
5). Audio Port (Line-In/Line-Out/Mike-In).	Connect External Speakers.
6). USB 2.0 Port.	Connect Devices like a USB Scanner, Keyboard or Printer.
7). RJ-45 LAN (Ethernet) Port.	Connect RJ-45 Cable for 100/1000 Mbps Ethernet Connection.
8). D-SUB 9-Pin COM (Serial) Port.	Connect Serial Devices like Barcode Scanners & Printers.
9). RJ-45 8-Pin Serial Port.	Connect Parallel Devices like a Printer.
10). D-SUB 15-Pin VGA Port.	Connect an External Monitor.
11). 2.5 ϕ 12V DC Output (for Rear Display).	Main Power Output For Rear Display.
12). DIN 4-Pin 12V DC Input (Input Power Connection).	Main Power Output.

