

# SAM4S Titan S

## Touch Screen POS System

- Industrial Quality LED Display 15" True Waterproof Flat Front Panel.
- 15" TFT LED, LVDS 1024 x 768 (XGA LCD) PCT Projected Capacitive Touch Technology Supports Multi-Touch.
- Intel Celeron N2807 Dual Core (S160) & N3160 Quad Core (S260) Fanless DDRIII 1 Slot 2GB Memory up to 8GB.
- SATA-II 2.5" 64GB SSD.
- 1 x 10/100/1000 Mbps LAN.

**SAM4S**  
Dual & Quad Core Faster Processors



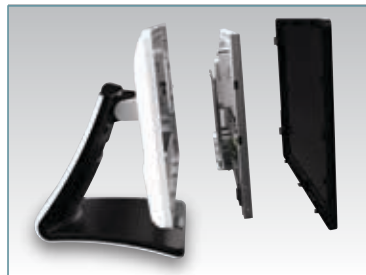
SAM4S TITAN S160 & S260 SPECIFICATION			
MODEL		TITAN S160	TITAN S260
System	CPU	Intel Celeron N2807 (Dual Core up to 2.16Ghz.)	Intel N3160 (Quad Core up to 2.24Ghz.)
	RAM	DDR III 1 Slot (up to 4GB)	DDR III 1 Slot (up to 8GB)
Display	LCD	15" LED Backlight LCD (1024 x 768)	
	Touch	PCAP Touch	
Interface	Serial	3 Ports (RI/5V/12V Bios Selectable) (1 Port: RS-422/485 (Jumper Selectable))	
	USB	2.0: 6 Ports	2.0: 4 Ports/3.0 2 Ports
	Ethernet	1 Port	
	VGA	1 Port	
	Drawer	1 Port/2CH (12V/24V Selectable)	
	Audio	1 Port (Line Out)	
	MSR	1/2/3 Track Support (USB)	
Optional	Rear Display	VFD (20CH x 2 Line, 256 x 32 Graphic) LCD (9.7", 15" Touch Option)	
	Wall Mount	VESA Wall Mount	
	Stand	V Stand	
Software	OS	POSReady7/Windows 8.1 Industry Retail/Windows 10 IoT Enterprise	
Power Supply		DC 12V/5A (60W)	
Dimension		379(W) x 264(H) x 362(D)mm	
Weight		6.0Kg	
Colour		Black (Titan S160) & White/Black (Titan S260)	
Certifications		CE/FCC/CB/CTUVus (NRTL)/RoHS/IP55 Rated	



- Vibrant 15" PCT Display.



- Easy Access to SSD.



- Simple Structure Design.



- Noise-Free Fanless CPU.



**SAM4S**

Distributed in the UK & NI by YCR Distribution Ltd. 01924 438238. Whilst every effort has been made to provide current photographs, descriptions and specifications the manufacturers reserve the right to change specifications, illustrations, model number and appearance of any item without prior notifications and therefore will not be held responsible for any variations.

YOUR LOCAL DEALER IS



# SAM4S Titan S

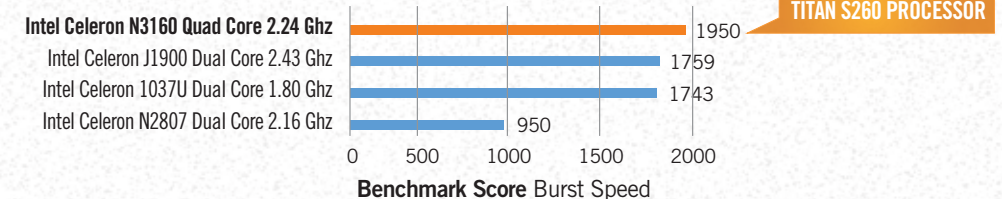
## Touch Screen POS System



**SAM4S**  
Water Resistant Front Touch Panel

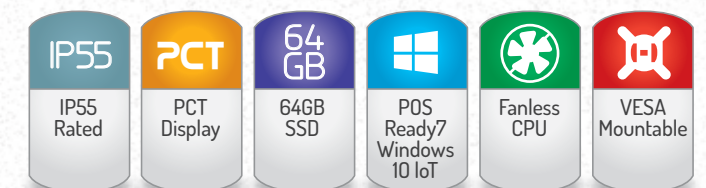


### CPU Benchmark Comparison



Latest PCT touchscreen technology for enhanced definition and durability.

### Key Features - At A Glance







**SAM4s**  
Water Resistant  
Front Touch  
Panel

# SAM4s Titan S

## Touch Screen POS System

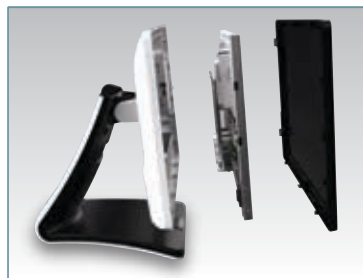
New styling and compact, multi-function EPOS terminal, fitted with the Intel Celeron processors combining speed with efficiency.



<http://bit.ly/2db2cjt>



• Easy Access to SSD.



• Simple Structure Design.

The Sam4s Titan S Series offers vibrant & precise 15" projected capacitive multi-touch display and is extremely durable in most environments including withstanding water contact, dust & grease (IP55 Rated).

The Sam4s projected (PCT) will activate with either a bare finger or a capacitive stylus preventing users from using pens, credit cards or sharp objects which potentially would reduce the life expectancy of resistive touch panels. In addition the screen has a more vivid & crisp colour enhancing the quality of the POS user interface.



Use LCD Rear Customer Displays for Food & Drink Promotions like 'Happy Hour', 'Kids Eat Free' etc.

Incorporating the latest Intel Celeron fanless processors' combines speed and efficiency along with quiet operation the Sam4s Titan S is one of the fastest & quietest PC POS terminals in its class. Coupled with its on board 64GB SSD, ensures that the solid state drive remains dust free & ingress free, ideal for harsh retail & hospitality environments.

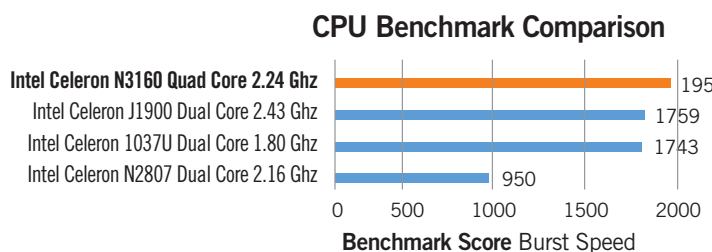
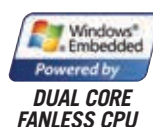
With its spill proof multi-touch bezelless display, ergonomic design and innovative base, the Sam4s Titan S is one of the most stylish and aesthetically pleasing point of sale terminals in its class. With either traditional stand or VESA options for wall & pole mount provides greater flexibility of installation.

The Sam4s Titan S Touch screen is supplied with an external power adaptor for

ease of replacement. A reliable & accessible system the Sam4s Titan PC POS terminal has many added benefits making it excellent value for money & a great investment as your POS equipment.

### Key Features:

- Industrial Quality LED Display 15" True Waterproof Flat Front Panel.
- 15" TFT LED, LVDS 1024 x 768 (XGA LCD) PCT Projected Capacitive Touch Technology Supports Multi-Touch.
- Intel Celeron N2807 Dual Core (S160) & N3160 Quad Core (S260) Fanless DDRIII 1 Slot 2GB Memory up to 8Gb.
- SATA-II 2.5" 64GB SSD.
- 1 x 10/100/1000 Mbps LAN.
- Easy Access Design Provides Easy Installation & Maintenance.
- External Power Adaptor.



TITAN S260 PROCESSOR



**S160**  
2.16 GHZ  
DUAL CORE  
PROCESSOR

**S260**  
2.24 GHZ  
QUAD CORE  
PROCESSOR

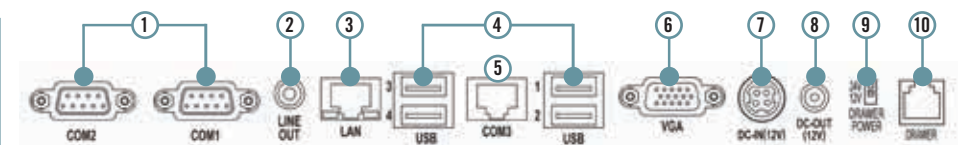


- Small Footprint
- Vesa Wall or Pole Mountable.
- Windows POSReady 7 Option Windows 10 Enterprise.

### Options Including:

- Sam4s 2-Line VFD Customer Display.
- Sam4s 9.7" Rear LCD Customer Display.
- Sam4s 15" Rear LCD Customer Display.
- Slimline MSR Reader.
- External Magnetic Dallas.
- External RFID Reader.
- Windows POSReady7, Windows 10 Enterprise & Linux.

*“The Sam4s Titan S Series- Combining Style, Performance & Reliability”*



### SAM4S TITAN S160/S260 CONNECTIVITY

1. D-SUB 9 Pin COM (Serial) Port. Connect external RS232 devices such as printers & scanners.
2. Audio port (Microphone/Line-Out/Line-In). Connect audio equipment such as speakers.
3. RJ-45 LAN (Ethernet) port. 100/1000Mbps Ethernet Connection.
4. USB 2.0 Port. Connect external USB devices such as USB Barcode Scanners, USB Printers.
5. RJ-45 8 Pin COM (Serial) Port. Connect external RS232 devices such as printers & scanners.
6. D-SUB 15 Pin VGA port. Connect an external monitor.
7. DIN 4 Pin 12V DC Input (Input power connection) Jack is connected to the external power adaptor.
8. 2.5 12V DC Output. Power output for external devices such as a Rear Display.
9. Drawer Voltage Switch. Set as either 12v/24v for cash drawer type.
10. RJ-11 6 Pin Cash Drawer port. Connection for cash drawer.

### NOT ILLUSTRATED

- HDD/SSD Slot (Rear Cover) Connect Internal 2.5" HDD/SSD.
- USB Ports (Rear Cover) Connect external USB devices such as USB Barcode Scanners, USB Printers.
- MSR Reader (Right Side) Fit optional Magnetic Card Reader.



**SAM4s**  
Dual & Quad  
Core Faster  
Processors



S-Series Optional 2-Line VFD Customer Display.

S-Series Optional 9.7" LCD Customer Display.

S-Series Optional 15" LCD Customer Display.

S-Series Optional Vesa Wall Mounting Bracket.



The Sam4s Titan S160 & S260 come with optional 2-Line VFD, 9.7" & 15" LCD Rear Customer Displays. A VESA wall mount adaptor for counter top or wall mount installations is also available.